

KISTUBE RI

Re-Injectable Grouting Hose

DESCRIPTION

KISTUBE RI, in use together with Kensetsu grouting chemicals, provides a designed solution for water-tightness in new structures.

KISTUBE RI is installed and secured in place prior to concrete pour. This injectable grout system allows a variety of Kensetsu grouting chemicals to permanently seal voids, the interfaces within penetrations, construction joints, walls by a fast, simple and low-pressure grouting method. Grouting is to be carried out only after the concrete is cured till minimum shrinkage is expected thereafter.

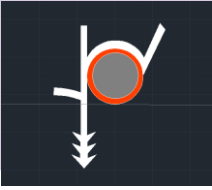
KISTUBE RI is made with special slit, which will open when a low-pressure (> 1 bar) is applied, and this design also prevent the infiltration of concrete water during casting. It is extremely flexible and is capable to follow contours and other construction designs. Placement are recommended to be in lengths of 10 metres, and in some cases, up to 30 metres if required.

ADVANTAGES

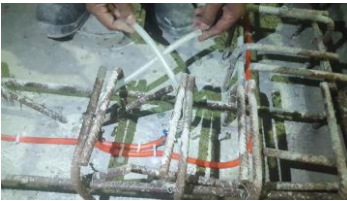
- Economical and effective.
- Simple installation.
- Suitable to be used with great variety of grouting.
- Multiple grouting is possible with careful maintenance.

APPLICATION GUIDELINES

- KISTUBE RI are secured between the reinforcement bars or along the interface joints of concrete slabs with KST specially designed clips, hence ensuring it remains in place even during concrete pouring.
- The base which the hosed is placed should be of reasonably smoothness to avoid formation of kinks that may create problem for flow of grouting materials.
- Clips are used to fixed the tubes onto the concrete with clips at approximately 200 to 300mm centres throughout the required length.
- At either end of the hose, there is an inlet and outlet hose with a length of 200 to 500mm lengths. These are typically colour coded blue and clear, which helps to identify where one length starts and the other end finishes. There are two alternative ways of forming the injection points, the standard way is for these lengths to be placed through the formwork to provide easy access when the injection work is required.
- The KISTUBE RI is placed flat to ensure correct installation and must not be placed against reinforcement. It should not cross ridges, or cross itself or other lengths of hose and must not bridge gaps.
- It is recommended that the tubes are placed consistently using the colour coding.
- Large areas of leakage found should be plugged prior to injection.



Secure KISTUBE RI between the reinforcement bars or along the interface joints of concrete slabs with KST specially designed clips.



Space an overlap of 100-150mm where 2 injection outlet points meet.



Outlet/Inlet Points are designed to be easily clipped into place to the hoses. These outlet/inlet points are then put into place by nailing to the formwork or by clips to the re bar.

PACKAGING

Rolls in 100 metres per drum.

STORAGE

KISTUBE RI should be stored at room temperature (min 10°C and max 38°C), kept dry and out of direct sunlight.

IMPORTANT NOTES

Any information and/ or specification contained herein is to the best of the company knowledge, true and accurate, it is always recommended that trial to be carried out to confirm suitability of use for all products, as no warranty is given or implied in connection with any recommendations and/or suggestions made by the company representatives, agents and/or distributors.

All information contained in this document is effective from date shown and supersedes all previous version. Please check with your local KENSETSU office to confirm that this is up to date version.